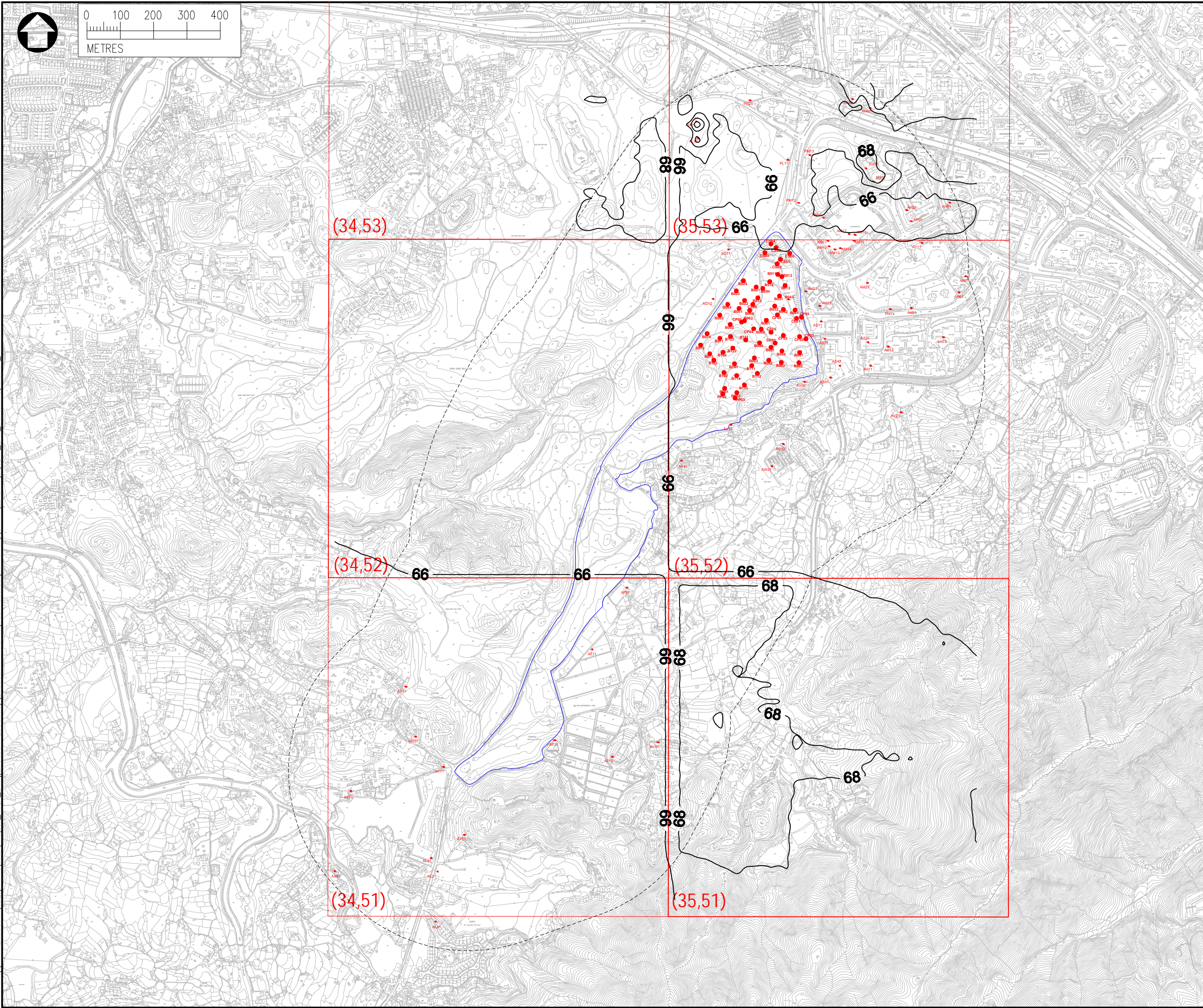


Date : 2022-05-05
 Filename : \\hkwn200dat16_SDE\7_Projects\Project_H321_Env\2535551-2535600\2535551A - Fanling Golf Course 6_Working\3_Air\Drawings\CE17_Env_Contour_Operation_v7



NOTES :

1. ALL DIMENSIONS ARE IN MILLIMETRES UNLESS OTHERWISE STATED.
2. ALL LEVELS ARE IN METRES (M) AND RELATIVE TO HONG KONG PRINCIPAL DATUM (mPD).

LEGEND :

- PROJECT AREA
- - - 500m ASSESSMENT AREA
- CONCENTRATIONS in (µg/m³)

AQO LIMIT OF CONCENTRATIONS

NO2	19TH HOURLY	200	µg/m ³
	ANNUAL	40	µg/m ³
RSP	10TH DAILY	100	µg/m ³
	ANNUAL	50	µg/m ³
FSP	19TH DAILY (Gov.)	50	µg/m ³
	36TH DAILY	50	µg/m ³
	ANNUAL	25	µg/m ³

Rev	Description	By	Date
Consultant			
Project title			
AGREEMENT NO. CE17/2019 (CE) TECHNICAL STUDY ON PARTIAL DEVELOPMENT OF FANLING GOLF COURSE SITE - FEASIBILITY STUDY			
Drawing title			
CONTOURS OF CUMULATIVE 10TH DAILY PM10 CONCENTRATION AT 1.5MAG OPERATIONAL PHASE			
Drawing no.		Rev.	
FIGURE 3.6c		-	
Drawn	Date	Checked	Approved
SC	MAY2022	CY	CCK
Scale	1:5000 (A3)	Status	-

© COPYRIGHT RESERVED

